

AUTUMN 2025 / 2026

THE BABBLER

Newsletter of the
Buloke and Northern Grampians Landcare Network



Photo Credit: Prue McAllister

FROM THE GROUND UP - WE MAKE IT HAPPEN

Welcome to the Autumn Edition of the Babblar

We are getting beautiful autumn days with lots of sunshine and cool nights. Enjoy it while you can.

There are quite a few grants open so if you have a project in mind, I'm happy to help/support you. The Committee is always happy to write a letter of support so please get in touch. Please put in for a VLG support grant to help your group with the cost of insurance, incorporation and operational needs.

Thanks to everyone for sending interesting articles and news. It's terrific to see what's happening in our patch. If there's anything you would like to see in the Babblar, please let me know.

I've loved getting out an about meeting group members and seeing the amazing work that has been and is being done. Every little bit counts no matter how big or small. Keep it up!!

Cheers Jane (Facilitator)

IN THIS NEWSLETTER

Hall of Fame - Pg 2 to Pg 3

Projects - Pg 4

Grants - Pg 5

Interesting Info - Pg 6 - 9

What's Happening - Pg 10 -
14

Other Bits & Pieces Pg 15

Activity Calendar - Pg 16

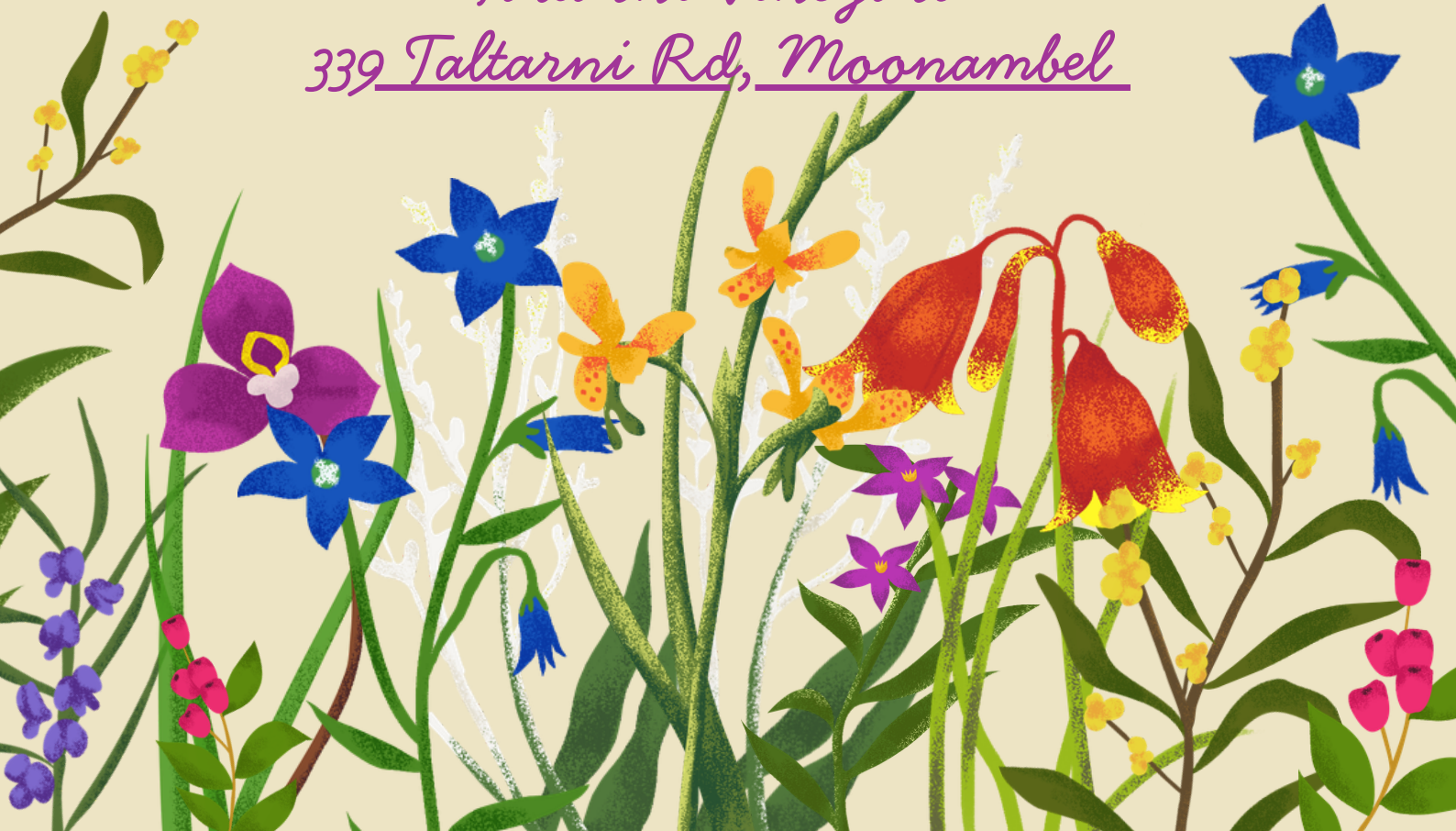


CHANGE OF DATE
to
Sunday 3 MAY 2026

*Buloke and Northern Grampians
Landcare Network*

Hall of Fame

*Taltarni Vineyard
339 Taltarni Rd, Moonambel*



BNGLN HALL OF FAME

The 2026 BNGLN Hall of Fame ceremony will be held **12.00pm** on **Sunday 3 May 2026** at the beautiful Taltarni Vineyard in Moonambel. The ceremony is a special occasion to celebrate the wonderful work that BNGLN volunteers do. There will be a delicious ploughman's lunch with the ceremony and music to follow.



NOMINATIONS

With the change of Hall of Fame date, there's plenty of time to nominate a person or group for a Hall of Fame award to recognise their tireless efforts and outstanding contribution to caring for the environment in the BNGLN area.

Nomination forms are on the BNGLN website. There is a form to download, or you can complete the online form. Visit <https://www.bnlandcare.org/2026/02/26/hall-of-fame-date-change/>

Nominations close 19 April 2026

For more information, please contact Maddie Grant or Jane Bowker

CEREMONY BOOKINGS

As we need to know numbers for the delicious ploughman's lunch, please let us know if you're coming. Bookings are through Humantix <https://events.humantix.com/bngln-hall-of-fame-ceremony>.



Photo Credit:
Taltarni Vineyard



PROJECTS AND PROGRAMS THAT MAY BE OF INTEREST

Farm Business Resilience Program

The FBR supports farmers to develop the knowledge and skills they need to improve their farm business and be better equipped to manage the impacts of drought and a changing climate. The FBR program supports farmers to improve skills and management practices in:

- business planning and risk management
- farm finances and profitable decision making
- managing people on farm, farm safety and wellbeing
- climate adaptation and natural resource improvement including soil, water, crops and pastures.

The FBR Program is jointly funded through the Australian Government's Future Drought Fund and the Victorian Government's Future Agriculture Skills Capacity Fund.

Website: <https://agriculture.vic.gov.au/farm-management/prepare/farm-business-resilience-program>

BushBank Program

BushBank provides opportunities for private landowners to restore and protect native vegetation on their land. Cassinia Environmental is delivering the program thanks to the Victorian Government's \$77 million BushBank program funding. Expressions of Interest are now open for this round of funding and close 31 March. If selected, all landowners will receive BushBank funding and guidance for their restoration project. Cassinia may also assist with project delivery.

Website: <https://cassinia.com/bushbank/>

Climate Positive Farming Initiative

North Central CMA is delivering the Climate Positive Farming Initiative across the catchment with funding through the Australian Government's Natural Heritage Trust under the Climate Smart Agriculture Program. The team is working with farmer groups to deliver workshops and field days on topics that will help farmers to improve soil health and build resilience into their farming systems. They would like to hear from yourselves about what speakers or topics you would like more information on. Examples of topics may include subsoil manuring or the use of gypsum or compost to improve soil health. Please share your ideas and thoughts with your Landcare facilitator Jane.

Website: https://nccma.vic.gov.au/media/documents/Carbon_Positive_Farming_Initiative_EoI.pdf

GRANTS

NCCMA ONLINE GRANTS WEBINAR

You are invited to a webinar to learn more about the 2026 Victorian Government's Landcare Grants in the North Central CMA region.

This webinar will be presented by the North Central CMA's Regional Landcare Coordinator, Belinda Pritchard and will cover:

- What are the Victorian Government's Landcare Grants
- What's available - support grants and project grants
- Eligible applicants, projects and activities under the Victorian Landcare Grants
- How to apply and what information you need
- Writing a strong application
- Other grants of interest to Landcare and NRM groups

Come along to learn more about who's eligible, what activities can be undertaken and how to apply. This webinar will be recorded for those who are unable to attend at the time.

When: Monday 30 March 2026, 6pm to 7pm

Where: online via Microsoft Teams

Register here <https://events.teams.microsoft.com/event/830deafe-fb96-451c-a319-9a4edb785230@d19cb125-cce6-40f3-b670-016d0379917b>

Questions? Contact Belinda Pritchard on 0408 342 593 or Belinda.pritchard@nccma.vic.gov.au



Victorian Landcare Grants (VLG)

Project Grants of up to \$20,000 are available for on-ground works, community education and engagement, and group/network development activities that protect or improve natural assets such as native vegetation, native fauna, waterways, wetlands and soils. Support Grants of up to \$500 are available for assistance with costs such as insurance, incorporation and operational needs. Applications close 5pm 23 April 2026

Partnerships Against Pests (PAP) Grants

Will be open in the next couple of months. Stream 2 provides funding for local or regional community groups interested in invasive species management. The grants help groups to run community-led projects that align with the program's goals. Groups can apply for funding between \$10,000 and \$50,000 (ex-GST) and complete their projects over 12 or 24 months.

Just to note that PAP grants are not eligible for on-ground works which are eligible under VLG. Projects that need funding from both grants need to have separate applications. For information on the PAP grants please contact Alastair Campbell on 0448 013 426 or alastair.campbell@agriculture.vic.gov.au

Northern Grampians Council Community Grants

Community, Arts & Culture, Creative Education, Tourism and Community Event Grants are now open. Visit their website [Council grant opportunities](#) to find out more.

INTERESTING INFO

Here's a bit of info on the Babbler, the newsletter's namesake. Thanks Carol for sending the information through.

White-browed Babbler. Pomatostomus superciliosus

The White-browed Babbler is endemic to mainland Australia, mainly south of the Tropic of Capricorn and west of the Great Dividing Range and to the north of the Dividing Range in Victoria, extending to south-eastern South Australia. Scattered populations are found in outback Northern Territory and Western Australia, particularly in the south-western corner of Western Australia (Birds in Backyards, 2026)

The White-browed Babbler feeds on insects, spiders and other invertebrates, small amphibians, crustaceans and reptiles and will also eat fruits and seeds. It mainly feeds on the ground, among leaf litter or under logs and branches.

Found in dry woodlands and open forests this intensely sociable bird lives in groups of up to 20. In the largely cleared east Wimmera region it is restricted to areas of bush and conservation reserves.

Noisy and active it builds multiple nests in wattles and other low shrubs; most of these nests are used for roosting as a group. It forages on the ground, quickly darting back to cover when alarmed.



Photo credit: Garry Cheers

INTERESTING INFO

Wimmera Mallee Wetlands Community Day by Carol Campbell

I attended the Wimmera Mallee Pipeline Wetlands Community Day on Wednesday 11 April 2026. Our hosts were representatives of Wimmera Mallee Pipeline (WMP), and the respective districts of three Catchment Management Authorities (CMA's) - North Central, Wimmera and Mallee. We had a great day out as the groups are responsible for managing 54 Wimmera Mallee (WM) wetlands. WM wetlands provide vitally important refuge for plants and animals in a dry landscape, thus 'water for the environment' delivers ecological benefits at the 52 sites. In a recent review more than 17 threatened flora species and four threatened fauna species were recorded. A map on the WM wetlands can be found <https://www.vewh.vic.gov.au/healthy-waterways/western-region/wimmera-mallee-wetlands>.

The water entitlement for the VMP wetlands is low reliability, therefore in any given year it is unlikely to receive full allocation. Due to the low reliability of the entitlement, a conservative approach to water usage has been adopted, with large annual carry over required. Management needs to ensure there is available carryover, which is the primary constraint to delivering additional volume to sites.



120 Eastern Longnecked Turtles (*Chelodina longicollis*) captured, counted and released at Roselyn (Birchip West). The turtles were the highlight of a recent outing for me.

Please value the seven environmental water sites in our NCCMA area.

Photo credit: Carol Campbell

INTERESTING INFO

Below is an article from the February 1997 Avon-Richardson and Avoca Catchment Newsletter.

JEFFCOTT NORTH LANDCARE GROUP NEWS

By Alison McEwan Hon. Secretary



Above: Sarah Sheridan is standing beside Salt bush that is 12 months old.

During 1996, the Jeffcott North Landcare members have been developing on-ground works on their properties that are significantly contributing to the objectives of the Avon-Richardson Catchment Plan.

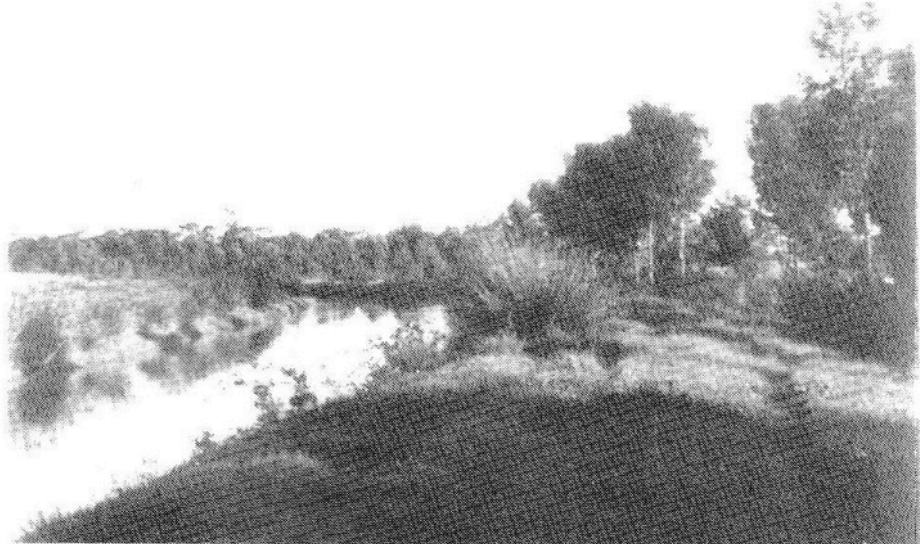
Linton and Barbara Reilly have been following a salinity control program along the Donald Main Channel. Salt tolerant Albacutya red gums and many other species, were planted 15 years ago to control seepage from the channel. Lucerne also has been planted in the lower paddock to reduce the water table and the possibility of salinity in this area.

Presently, Linton and Barbara are revegetating their sand hills and have planted 3500 trees in the last two years. These have included local natives such as Leucoslyn, Black Mallee Box grown from seed collected locally.

Paul and Karen Sheridan have successfully established perennial pastures on the lunettes and in the corridors, east of Lake Buloke. However, in some areas the height of the water table and the high salinity level results prevent the establishment of Lucerne. 'Old Man' salt bush has been planted in place of Lucerne and is proving a suitable alternative.

Currently, further planting of salt bush in alleys is being undertaken to lower the wind speed, providing an effective wind break and alternative fodder for stock.

Through the Land Protection Incentive Scheme, a number of members have sown Lucerne to establish perennial pastures with varying success with the stirke rate, requiring resowing in some areas. One successful attempt was when Frank O'Shea sowed Lucerne on red sandy loam in November 1995 and was fortunate enough to have 18mm of rain within a few hours which resulted in a very successful stand.



Right: Donald's Main Channel with Redgums

INTERESTING INFO

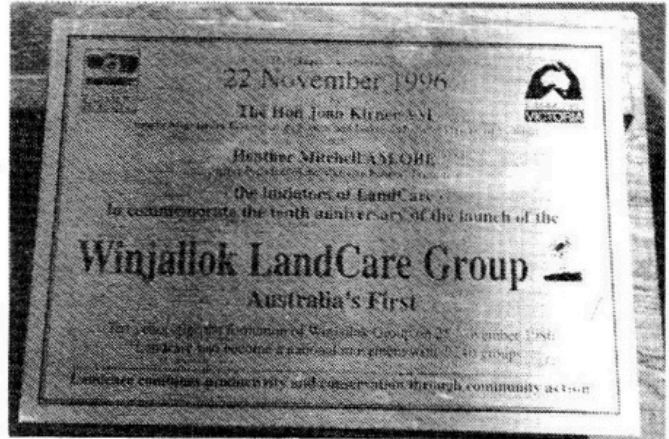
Below is another article from the February 1997 Avon-Richardson and Avoca Catchment Newsletter.

Landcare Anniversary Celebrated at Winjallok

The Honourable Pat McNamara officially celebrated the tenth anniversary of the launch of the Winjallok Landcare Group on Friday 22nd of November.

The Winjallok Group was officially recognised as Australia's first Landcare Group.

The property of Terry Simpson provided an ideal site for those who attended to view productive solutions to land degradation. Terry's commitment to the Landcare cause has been well documented and it was fitting that two other pioneers of Landcare were present to unveil a plaque to commemorate the occasion.



Above: The 10th Anniversary Plaque presented to the Winjallok Landcare Group.

Former Premier Joan Kirner and former VFF President Heather Mitchell were jointly introduced by the Minister for Natural Resources.



Above: Joan Kirner, Heather Mitchell and Terry Simpson at the official ceremony.

Other guests included the Minister for Police and Emergency Services the Honourable Bill McGrath, current VFF President Wally Shaw, local member for Ripon Stephen Elder, Alex Arbuthnot and Jeremy Gaylard current chair of the Catchment and Land Protection Council.

The day was organised by the Victorian Farmers Federation and the Department of Natural Resources and Environment.

WHAT'S HAPPENING



ST ARNAUD FIELD NATURALISTS

NATURAL SEED COLLECTION AND STORAGE

Farmers have trees, shrubs and grasses growing on their properties. Many are probably growing naturally from the seed of trees, shrubs and grasses that have grown on the farm property for a very long time. These plants have certain characteristics that adapt them to living in the environment that the farm property and the climate provide (the soil type, aspect, water availability).

The trees most likely to grow well on the farm property are trees that originate from the property's natural trees. Seeds from natural trees and other natural plants can be collected freely from the farm property and stored.

Later they can be germinated and grown on in nurseries. Or the seeds can be sold on with a particular provenance.

NATURAL SEED COLLECTION AND STORAGE WORKSHOP

Lindsay Ezard has been collecting, storing and selling natural seed since retiring from the Local Agriculture Department, gaining expert knowledge of the requirements and peculiarities of different local tree, shrub and grass species.

He has very kindly offered to talk to us about his business and demonstrate the methods and tools he uses.

He will happily give individual advice to us as potential natural seed collectors and storers.

The St Arnaud Field Naturalists Club and the Buloke and Northern Grampians Landcare Network, invite you to join us for a workshop to learn about

NATURAL SEED COLLECTION AND STORAGE WITH LINDSAY EZARD

Date: Wednesday 15th April 2026

Time: 10 am to 2pm

Location: 'Raillery Hub', St Arnaud and Lindsay's Town Block.

Schedule:

10am: Meet at Raillery Hub for morning tea/coffee and introduction by Lindsay.

11am: Go to Lindsay's seed facility in Sturt St, St Arnaud where he will show us the equipment he uses to separate seeds, the types of seeds he stores and how they are stored.

12.30pm: Lunch and informal chat back at the Raillery Hub.

RSVP: before Wednesday April 8th, 2026

Email: Secretary at starnaudfielddnats@gmail.com

Phone: Carol on 0499 586 008



FRIENDS OF MOUNT WYCHEPROOF

ANZAC Day 2026

The FoMW, Wycheproof RSL sub-branch, Wycheproof Lions Club and the Wycheproof & District Historical Society are planning a slight alteration to the 2026 ANZAC day celebration. This year, being a Saturday, the normal flag raising and speeches will occur from 11am in the morning at the Cenotaph at Centenary Park.

People will then head to the BBQ shelter circle on Mt Wycheproof where a re-dedication of the 1918 WW1 Avenue of Honour will occur and a barbecue luncheon.

Descendants of the 25 memorialised soldiers will be attending on the day. Everyone is very welcome to attend.

Potted History of that Avenue and the Mount.

It is to be noted that the first Wycheproof District soldier killed (on the actual ANZAC day) was memorialised by the first tree planted by his sister in 1918 in the Avenue, an action organised by the group who were compiling and sending compassion packages to the front line.

Interestingly the species chosen in 1918 was of an Australian native being Kurrajongs (then called Currajongs). It is to be remarked that a lot of Avenues of Honour in the early 1900s were of European tree species. And also, to note that Kurrajongs were not indigenous to the Wycheproof area.

Unusually the 1918 Avenue was lost to general knowledge of the locals and was not rediscovered till 2016 or so. This came about probably because in 1918 the area on the Mount was the location of the Agricultural & Pastoral Show and had been the path from one side of the Mount to churches, School, Post office, golf course and houses on the other. In the 1930's a new Recreation Reserve was created to the north of Wycheproof, and all the sporting events, horse racetrack, A&P show, golf course, etc moved there over 20 years or so.

And thus, the Mt Wycheproof Reserve became more dedicated to the natural environment. The little rider is that in the 1950/60's trees were planted on the downside slopes to help stop erosion. Which has been successful, however the species of Australian plants used was in the majority Western Australian. These have a limited life and are slowly degrading.

In the mid 1960's sheep grazing on the Mount was curtailed.

Also, in the 1960s to 1980s the Wycheproof community fenced off the Mount and tried to create an Australian species of fauna zoo. Over time this idea died out, and in 2019 the surround fences were removed by FoMW and the Lions Club to open the Mount to all.

It is interesting to see how the Mount use has changed in the last 160 years and the FoMW are restoring the reserve back to pre-European settlement environments within the limits of water supply tanks, access roads and public toilets, barbeque, avenue of honour, etc.

The desire for restoration to pre-European environment is limited by a 1950's to 1980's quarry for road making materials on the east side of the Mount, which is still open, and is used for storage by the Shire. Its value remains in part because some of the unique Wycheproof minerals have been found in that quarry.



JEFFCOTT NORTH

Jeffcott North LG is focussing on the Plains-wanderer as one of their key species. Below are the results of a survey conducted in 2024 on Paul Sheridan's property organised by the Birchip Landcare Group in partnership with Dr Aaron Grinter from Zoos Victoria. BNGLN has purchased some new Birdweather PUCs to assist in further surveying the Plains-wanderer. The PUCs capture and identify bird songs which are uploaded to Birdweather, a living library. You can visit the [library](#) here to see what is being recorded in Australia.



Bioacoustic Surveys for Plains-wanderers at 'Wavells' Grassland April 2024 to January 2025

Background

The Plains-wanderer (*Pedionomus torquatus*) is listed as critically endangered under both Victorian state and Australian national legislation (DEECA 2024a: Commonwealth of Australia 2016) and endangered under the IUCN Red List (IUCN 2025). Based on their genetic uniqueness and high risk of extinction, Plains-wanderers were ranked the highest priority for conservation among all birds of the world (EDGE 2022). Due to their cryptic nature and the openness of their grassland habitat, the predominant survey method for Plains-wanderers has been bioacoustics surveys, with a continuous monitoring program commencing in Victorian in 2017. This program is currently led by Zoos Victoria and surveys occur at more than 100 sites across the state.

In 2022, the Birchip Landcare Group received funding from the Mallee CMS to install bioacoustics recorders at 5 farms around the Lake Buloke area to understand if Plains-wanderers still frequent these grasslands. From 2022 to 2024, Plains-wanderers were periodically detected at 3 of the 5 sites. Historical records of Plains-wanderers in the Wavells paddock led to this paddock being added to this program in 2024, with support from DEECA and Trust for Nature. For additional information on the site please refer to correspondence from Paul Foreman, Blue Devil Consulting.

Method

A single bioacoustics recorder (Wildlife Acoustics Song Meter SM4) is placed on a star picket at each monitoring site. The tested range of these devices is approximately 190m, or 12ha. The device is programmed to record for two hours per day: 30 minutes either side of both sunrise and sunset as these are peak calling times for Plains-wanderers. SD cards are collected, and batteries changed, approximately every 6 months. Recordings are uploaded to [Arbimon](#), a free call recognition program that analyses the recordings for potential Plains-wanderer calls, which have validated by a species expert.

The following data represent recordings from the period 12/04/2024-07/01/2025. Calling bouts are described as the period of continuous unbroken calling at a site, which may indicate either a resident bird, or each instance, a Plains-wanderer was present at the site.

Results

Number of recording days	267
Plains-wanderers detected	Yes
Number of individual calls	250
Number of days calling	29
Number of calling 'bouts'	20
Days where calling was recorded	27/04/2024, 02/05/2024, 03/09/2024, 07/09/2024, 08/09/2024, 09/09/2024, 10/09/2024, 13/09/2024, 18/09/2024, 23/09/2024, 25/09/2024, 26/09/2024, 27/09/2024, 29/09/2024, 30/09/2024, 01/10/2024, 02/10/2024, 05/10/2024, 07/10/2024, 20/10/2024, 21/10/2024, 22/10/2024, 11/11/2024, 28/11/2024, 29/11/2024, 04/12/2024, 07/12/2024, 09/12/2024, 12/12/2024

Discussion

The above data indicate a significant volume of Plains-wanderer activity at this site, with individuals calling for 29 out of the 267 days the device was recording. This places this site within the top 30% of all sites across the state for Plains-wanderer activity in 2024.

Plains-wanderers were only recorded at 35 grassland sites in Victorian in 2024, meaning that that Wavells Grassland is an important location for the species, and one of few sites that were suitable for the species in that year. As Plains-wanderers continue to lose habitat due to conversion to cropping, it is imperative that Wavells Grassland be acquired and protected for the conservation of the species.

Thank you, Dr Aaron Grinter

AVON PLAINS BANYENA

Surviving Summer by Prue Macalister

With autumn in the air and a welcome rainfall freshening the soil, we can now put the memories of the long hot, dry summer behind us, at least for now. I think we all witnessed the stress of overheated birds on those catastrophic fire danger days. Birds drawn to the shade, wings uplifted and beaks open and tongues extended as they tried to keep cool.

Although we are just 100m from the Richardson River it was virtually dry with the remaining water holes toxic shades of orange, green and yellow, so not much joy for a thirsty creature there. Our garden then became a refuge for the local wildlife and our mini wetland a magnet for those wanting a dip or a drink.

One of the positives out of the COVID shutdown was having the inspiration, motivation and time to install a pond in our backyard. Like many of the older farms, our yard is surrounded by pepper trees under which stinging nettles thrived, but little else. So we got busy and installed a lined pond, complete with boulders, a metre deep area, rock lined shallows and a variety of aquatic vegetation which all help to create a natural balance that keeps the water healthy and clear.

The removal of a couple of the pepper trees also allowed some hardy natives to be planted and thrive. It is now a delightful area, surrounded by native groundcovers and a popular spot for the birds.

Over summer, this pond proved to be a lifesaver for insects, a variety of birds and even the wallabies that are usually confined to the river. All the regulars of the garden were there, sipping, splashing, diving, foraging, or just hanging around in the cool. Their tolerance of each other sets a fine example of a civilized society. There was a steady stream of bees collecting droplets of water to take back to their hives where they deposit them on the combs. Evaporative cooling is then provided by other bees fanning the water. A sacred kingfisher became a regular visitor, plunging into the water from a convenient perch, not daunted by my presence on the nearby swing seat.

The arrival of a spotted harrier on a 45° day was a highlight that had me reaching for the binoculars, camera and birdbook. It was a majestic but sad sight, panting with its skinny chest revealed as it raised its wings to allow its body to cool. It too chose to splash into the water, as did a Collared Sparrowhawk and a Southern boobook, (mopoke) caught on the covert camera one night. It wasn't just the pond that attracted the wildlife, but shallow dishes under dripping taps, birdbaths just metres away from the house and wobble tee sprinklers all became hotspots for a variety of birds and insects trying to rehydrate and escape the heat.

Our little backyard wetland has shown us how even modest garden changes can support local wildlife, especially during extreme heat. Providing water, shelter and native plants can turn an ordinary garden into an important refuge. It's a simple step many of us can take to help the birds and animals that share our landscape.

The pleasure and satisfaction we gain from observing the activity at the pond provides a mental health boost that is hard to match.



Diamond firetail (right) - a rare visitor but hung around for those catastrophic fire danger days



Spotted harrier (left)

Sacred kingfisher and Eastern rosella (right)



White-winged Chough (above) - preferred the sprinklers



Collared sparrowhawk (right) - preferred the birdbath, not daunted by the bees

OTHER BITS AND PIECES

Victorian Volunteering Awards

Nominations are open for the 2026 Awards. The Awards are an opportunity to recognise and thank volunteers across Victoria for the incredible contributions they make to our state and local communities. Nominations Close 27 May 2026. If you know someone or a group you'd like to nomination, let Jane know. For more information visit

<https://www.volunteeringvictoria.org.au/events/awards/>

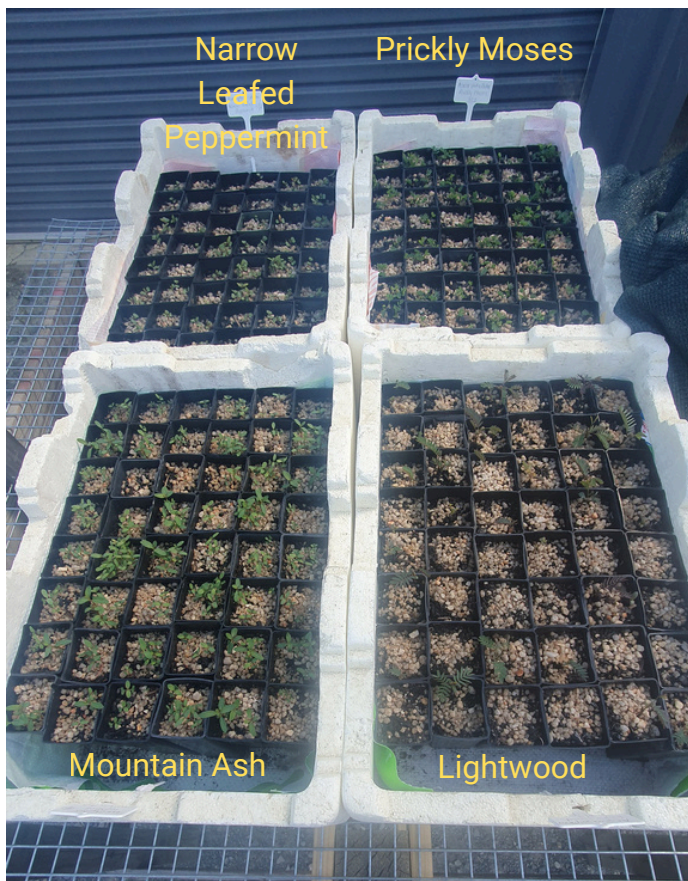
Landscape Action Plan Handbook

Landcare Vic will be launching the Landscape Action Plan Handbook to the wider Landcare Community 4pm - 5pm on Wednesday 1 April 2026 online. It would be wonderful to have as many of you there as able, as a celebration and demonstrating the value of the program. Register here:

<https://events.humanitix.com/handbook-launch>

Jane's Tree Project

My seedlings are coming along well. The seeds were planted on 9 Feb and the Silver Wattle was the first to shoot. The Peppermint and Messmate were both the slowest to get going but the Peppermint has really taken off. The Messmate is still a bit slow. The Lightwood hasn't had the best strike rate, and the Silver Wattle has the best strike rate. I'm looking forward to seeing what the next few months bring. I'm growing the seedlings as part of the TreeProject which trained volunteers grow indigenous seedlings for rural landholders and Landcare groups who need help with revegetation. Have a look at the website <https://treeproject.org.au/>



BNGLN ACTIVITY CALENDAR

This calendar is for BNGLN group activities. Please let Jane know of any up-and-coming activities / events. These will also be listed on the BNGLN website.

DATE/TIME	ACTIVITY	WHERE	DETAILS
30/03/2026	Grants Webinar	Online	Webinar to learn more about the 2026 Victorian Government's Landcare Grants in the North Central CMA region
25/04/2026	Friends of Mt Wycheproof - ANZAC Day	Mt Wycheproof	Friends of Mt Wycheproof and Wycheproof RSL sub-branch are hosting a re-dedication of a lost WW1 avenue of honour
12/04/2026	Bi-monthly working bee	Mt Wycheproof	
15/04/2026	Natural seed collection and storage with Lindsay Ezard	Raillery Hub, St Arnaud	St Arnaud Field Nats have organised a workshop on native tree seed collection and storage
03/05/2026	BNGLN - 40 Year Anniversary of Landcare and Hall of Fame	Taltarni Vinyard, Moonambel	Lunch and Hall of Fame event at Taltarni. Bookings https://events.humanitix.com/bngln-hall-of-fame-ceremony
14/06/2026	Bi-monthly working bee	Mt Wycheproof	
12/07/2026	BNGLN - Xmas in July	TBC - somewhere warm!	For all group members to get together
02/08/2026	Bi-monthly working bee	Mt Wycheproof	
04/10/2026	Bi-monthly working bee	Mt Wycheproof	
13/12/2026	International Mountain Day	Mt Wycheproof	Working bee and event

The Babbler is a publication of the
Buloke and Northern Grampians Landcare Network

The Babbler is produced quarterly - Summer, Autumn, Winter and Spring.

If you would like to receive a copy of the Babbler, please contact Jane via the details below. The Babbler is also available on the Network's website.

If you would like to place an article in the Babbler, get in touch with Jane.

Contact: Jane Bowker, Network Facilitator
E: info@bnglandcare.org
M: 0408 625 727

Our Website: www.bnglandcare.org



We acknowledge that our Network performs its activities on Dja Dja Wurrung and Barengi Gadjin Country. We acknowledge and extend our appreciation for the Dja Dja Wurrung and Barengi Gadjin peoples, the Traditional Custodians of the country on which we work and volunteer. We pay our respects to leaders and Elders past and present for they hold the memories, the traditions, the culture and the hopes of all First Nations Peoples. We express our gratitude in the sharing of this Country, our sorrow for the personal, spiritual and cultural costs of that sharing and our hope that we may walk forward together in harmony and in the spirit of healing.

